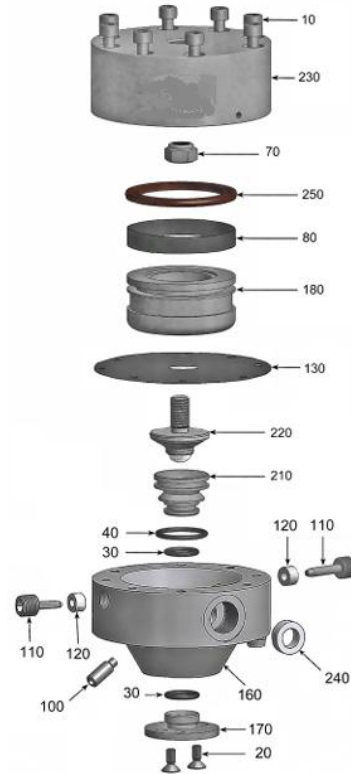
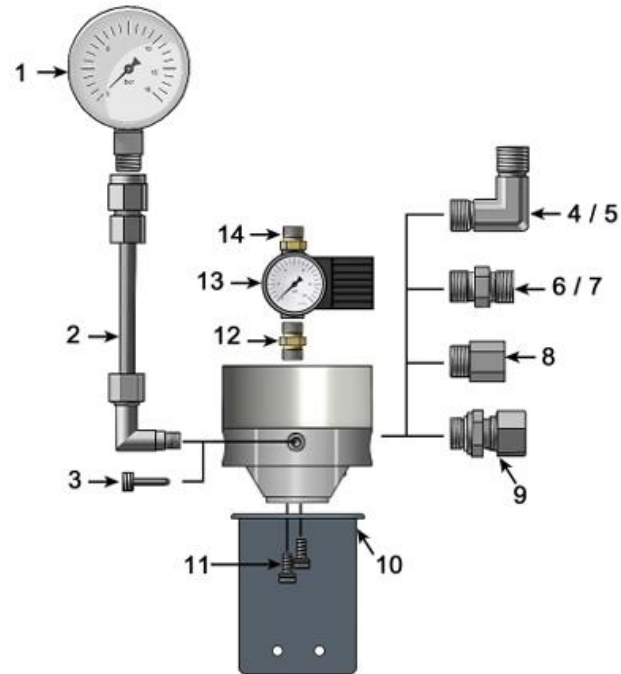


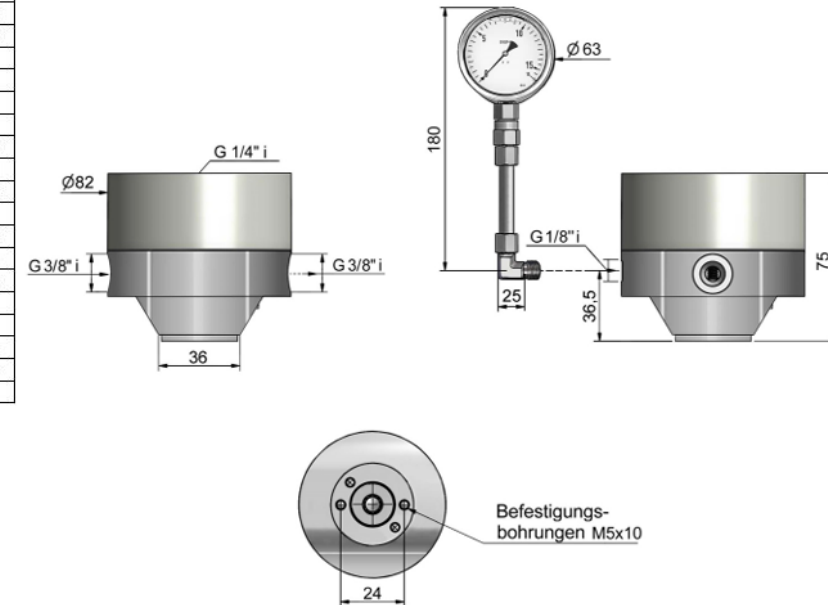
REGOLATORE DI FLUSSO PNEUMATICO

Anbauteile für pneumatische Materialdruckregler P10-VP / P10-RP



Pos.	Amount	Description	Part-Number
10	8	screw	90711 005035
20	2	screw	96711 004010
30*	2	o-ring	
40*	1	o-ring	
70+	1	hex nut	
80+	1	guide band	
100	2	screw	94710 206020
110	2	locking screw with pin	15010 010111
120	2	sealing ring	35450 004009
130*	1	diaphragm	
160	1	lower housing	15010 012160
170	1	lid	15010 011170
180	1	piston	15010 012180
210+	1	valve seat	
220+	1	valve tappet	
230	1	upper housing	15010 012231
240	2	sealing ring (optional)	35450 009015
250*	1	piston seal	

Abmessungen des Materialdruckreglers P10-VP/RP



C.M. SPRAY S.R.L. Via T. Salsa, 10 z.i. 31030 CARBONERA (TV) ITALY

Sede Legale : Via Lanzaghe, 32/D - 31057 SILEA (TV)

Tel. 0422.398768 - Fax 0422.398594 - www.cmspray.it e-mail: cmspray@cmspray.it

P.IVA 02098100262 - R.E.A. Treviso n.0188412 - Reg. Imp. TV n. 02098100262 - Cap.soc. € 10.400,00 i.v.